

The National Biobanking Programme
A collaboration between SWEGENE and Wallenberg Consortium North

Programme

February 15

8.30	Introduction	
08.45	Introductory Lecture Association studies in the genetic epidemiology of cancer	<i>Richard Houlston, ICR, UK</i>
9.45 – 12	Which are the registries and how to use them?	
9.45	The Swedish Twin Registry	<i>Ulf de Faire, Karolinska institutet</i>
10.15	The Multi-Generation Registry	<i>Anders Ekblom, Karolinska institutet</i>
10.45	The Swedish Cancer Registry	<i>Lotti Barlow, The National Board of Health and Welfare</i>
11.15-11.45	The Inpatient Registry	<i>Johan Askling, Karolinska institutet</i>
	Lunch	
13.00	The Regional Biobank Registry	<i>Henrik Siman, Lund University</i>
13.35	The Medical Birth Registry	<i>Olof Akre, Karolinska institutet</i>
	Which are the biobanks and what do they contain?	
14.10-14.35	Cytology and virology biobanks	<i>Joakim Dillner, Lund University</i>
14.35	Coffee	
14.55	Research Biobanks	<i>Göran Berglund, Lund University</i>
15.30	Frozen tissue biobanks	<i>Johan Botling, Uppsala University</i>
16.10-16.45	Usefulness of different types of samples. Whole genome amplification.	<i>Joyce Carlson, Lund University</i>

February 16

	Study designs	
08.30	Linkage studies	<i>Johan Holmkvist, Lund University</i>
09.05-09.35	The BC gene database	<i>Anders Dahlin, Lund University</i>
09.35	Coffee	
10.00	Survival analysis in genetic epidemiology	<i>Peter Almgren, Lund University</i>
10.35	Prioritizing genes under linkage peaks	<i>Hemang Parikh, Lund University</i>
	Legislation and ethics	
11.10-11.55	The Swedish legislation on Biobanks and Research Ethics	<i>Mats G. Hansson, Uppsala University</i>
	Lunch	
13.00	What is respect for integrity?	<i>Mats G. Hansson, Uppsala University</i>
	Technology Platforms	
13.35-13.55	SNP genotyping by mass spectrometry. Microsatellite genotyping	<i>Christer Halldén, Lund University</i>
13.55	Coffee	
14.10-14.40	New Molecular tools (proximity ligation, circle to circle amplification et c)	<i>Ulf Landegren, Uppsala University</i>
15.00-15.45	The Human Proteome Atlas	<i>Fredrik Pontén, Uppsala University</i>
16.00-16.45	Pathology Biobanks/Tissue Arrayin	<i>Göran Landberg, Lund University</i>
	<i>Homework in groups: Design of a molecular epidemiologic study</i>	

Coordinator: Joakim Dillner

Dept. of Medical Microbiology, Lund University, Malmö University Hospital, Entrance 78, S-20502 Malmö, Sweden

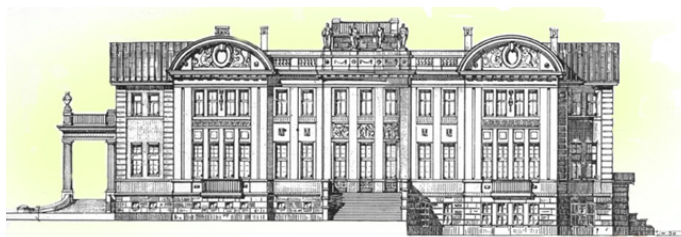
Tel:+46 40 338126; Fax:+46 40 337312; E-mail: joakim.dillner@mikrobiol.mas.lu.se

The National Biobanking Programme
A collaboration between SWEGENE and Wallenberg Consortium North

February 17

- 8.30: Presentation by the students of their group work. Discussions**
Lunch
- 13-17 Examples from past and current biobank studies**
- 13.00** Biobank-based studies in rheumatology *Lars Klareskog, Karolinska institutet*
13.45-14.20 Using the Profiling Polygenic Diseases platform: *Marketa Sjögren, Lund University*
Positional cloning of chromosomal regions linked to type 2 diabetes.
- 14.20 Coffee**
- 14.45** An overview of major studies within the Northern *Göran Hallmans, Umeå University*
Sweden Health and Disease Study
- 15.20** Genetic epidemiology of breast cancer *Håkan Olsson, Lund University*
16.00 Biobanks in elucidation of infectious causes of cancer *Joakim Dillner, Lund University*

Concluding remarks



The course will be held at Fridhemsborg, Fridhemsvägen 2, Malmö.
For directions, and information if you need a hotel room, please see next page.

Registration information, please see last page.

The National Biobanking Programme

A collaboration between SWEGENE and Wallenberg Consortium North

Directions to Fridhemsborg, Fridhemsvägen 2, Malmö

Copenhagen Airport (Kastrup) in Denmark is the closest airport when flying to Malmö.

Directions from Kastrup airport: The train station is located at Terminal 2. Tickets are bought at the Danish Railways DSB stand and cost about 8 euros. If you return within 24 hours, you can buy a Return ticket. (Swedish railways “Skånetrafiken” also has ticket vending machines). The trains to Malmö leave every 20 minutes (at 13, 33 and 53 minutes past the hour).

Travel time to Malmö Central station from Copenhagen airport is 22 minutes.

At Malmö Central station, take bus nr 20 (direction “Ringlinjen via Gustav Adolfs torg”) or bus nr 22 (direction “Ön via Lindängen”) to bus stop Ribersborg. (Bus nr 20 takes about 10 minutes, bus nr 22 takes about 4 minutes). Walk along Limhamnsvägen for two blocks to Fridhemsvägen.

You can also take a taxi to Fridhemsvägen 2.

If you must fly to Malmö airport (Sturup), there is a 40 minutes bus ride to Malmö Central station. Take the airport bus towards Malmö Central station.

At Malmö Central station, take bus nr 20 (direction “Ringlinjen via Gustav Adolfs torg”) or bus nr 22 (direction “Ön via Lindängen”) to bus stop Ribersborg. (Bus nr 20 takes about 10 minutes, bus nr 22 takes about 4 minutes). Walk along Limhamnsvägen for two blocks to Fridhemsvägen.

You can also take a taxi to Fridhemsvägen 2.



If you need to stay over night, please contact Anna Olofsson at anna.olofsson@mikrobiol.mas.lu.se She will book a hotel room for you.

More information about the course site can be found at <http://www.lub.lu.se/fridhemsborg/allm.htm>

Coordinator: Joakim Dillner

Dept. of Medical Microbiology, Lund University, Malmö University Hospital, Entrance 78, S-20502 Malmö, Sweden

Tel:+46 40 338126; Fax:+46 40 337312; E-mail: joakim.dillner@mikrobiol.mas.lu.se

Molecular and Genetic Epidemiology

A three-day practical course on the infrastructural possibilities to conduct biobank-based studies in Sweden.

February 15 – 17 2005
Fridhemsborg, Malmö, Sweden

Sweden provides unique possibilities for biobank research. Each year, Swedish biobanks add more than 3,000,000 biological samples to their collections. Together with well-functioning official registries and the National Registration Number that enables linkage of different databases, these biobanks make part of an infrastructure particularly suitable for population based biobank studies.

The individual researcher, however, has several obstacles to surpass before launching his study. First, the biobanks are constructed within many different health care programs, and information about location of the samples can be hard to obtain. Second, identification of research subjects in population based studies often involves the use of our official registries and handling these data sources requires knowledge of their organization and coverage. Third, biobanks and research ethics have been subjected to new legislation lately, and basic knowledge of these laws is essential for all researchers who are to conduct biobank studies in Sweden. Fourth, the researcher must master state-of-the-art knowledge about efficient study designs and realise the possibilities and limitations of technological platforms and data analysis.

The aim of the present three-day course is to give practical advice on how biobank-based studies can be conducted in Sweden.

The course is intended for all researchers whose hypotheses can be addressed through the use of biological samples.

The course is organized and sponsored jointly by Swegene and by the Wallenberg Consortium North (WCN)

The programme and practical information about the course are posted on the WCN and Swegene websites as well as at www.biobanks.se. You can also contact Joakim Dillner at joakim.dillner@mikrobiol.mas.lu.se.

Please notify Anna Olofsson your intention to participate at this fee free course at anna.olofsson@mikrobiol.mas.lu.se, phone 040-33 61 53, fax 040-33 73 12.

The number of participants is limited. We need your registration at the latest on the 17th of January 2005.

Coordinator: Joakim Dillner

Dept. of Medical Microbiology, Lund University, Malmö University Hospital, Entrance 78, S-20502 Malmö, Sweden

Tel:+46 40 338126; Fax:+46 40 337312; E-mail: joakim.dillner@mikrobiol.mas.lu.se